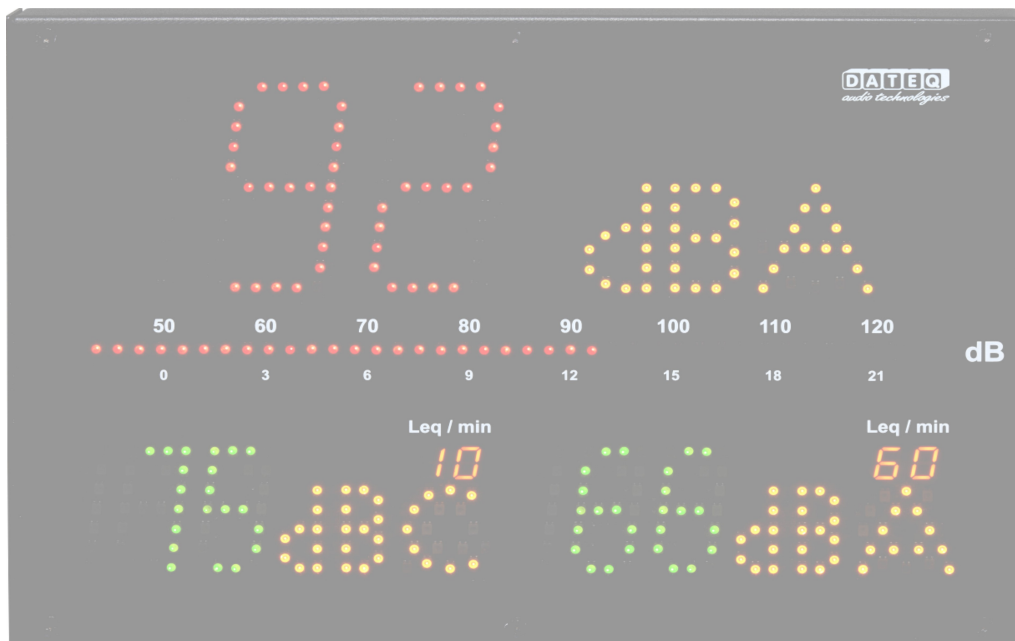


SPL-EXT3

MULTI COLOR DISPLAY EXTENSION

Manual



DATEQ
audio technologies

Due to the nature of this product and its designed functionalities it is considered to be used and installed solely by professional and certified installers and is not intended for consumer usage or resale. Consumer use is not supported by the manufacturer.

Safety instructions

1. All safety instructions, warnings and operating instructions must be read first.
2. All warnings on the equipment must be heeded.
3. The operating instructions must be followed.
4. Keep the operating instructions for future reference.
5. The equipment may never be used in the immediate vicinity of water; make sure that water and damp cannot get into the equipment.
6. The equipment may only be installed or fitted in accordance with the manufacturers recommendations.
7. The equipment must be installed or fitted such that good ventilation is not obstructed in any way.
8. The equipment may never be installed in the immediate vicinity of sources of heat, such as parts of heating units, boilers, and other equipment that generates heat (including amplifiers).
9. Connect the equipment to a power supply of the correct voltage, using only the cables recommended by the manufacturer, as specified in the operating instructions and/or shown on the connection side of the equipment.
10. The equipment may only be connected to a legally approved earthed mains power supply.
11. The power cable or power cord must be positioned such that it cannot be walked on in normal use, and objects that might damage the cable or cord cannot be placed on it or against it. Special attention must be paid to the point at which the cable is attached to the equipment and where the cable is connected to the power supply.
12. Ensure that foreign objects and liquids cannot get into the equipment.
13. The equipment must be cleaned using the method recommended by the manufacturer.
14. If the equipment is not being used for a prolonged period, the power cable or power cord should be disconnected from the power supply.
15. In all cases where there is a risk, following an incident, that the equipment could be unsafe, such as:
 - if the power cable or power cord has been damaged
 - if foreign objects or liquids (including water) have entered the equipment
 - if the equipment has suffered a fall or the casing has been damagedif a change in the performance of the equipment is noticed
Appropriately qualified technical staff must check it.
16. The user may not carry out any work on the equipment other than that specified in the operating instructions.

Index

Safety instructions.....	3	Operation.....	8
Introduction.....	5	Technical specifications.....	10
Installation.....	6	Product support.....	12
Connections.....	7		

Introduction



The SPL-EXT3 is a Multi color extension display that can be linked to the SPL-D3, SPL5 MK2 and SPL6 limiters. The display will show in green, orange or red the measured sound levels of the connected limiter.

The unit is plug and play ready and only needs the correct configuration in the linked limiter software.

Product support

For questions about the SPL limiter series, accessories and other products you can contact:
contact opnemen met:

DATEQ Audio Technologies

De Paal 37
1351 JG Almere
Netherlands

Telephone: +31(0)36 – 5472222
E-mail: info@dateq.nl
Internet: www.dateq.nl

Installation

The SPL-EXT3 is installed apart from the audio source (a mixing desk for example), the speakers and amplifier.

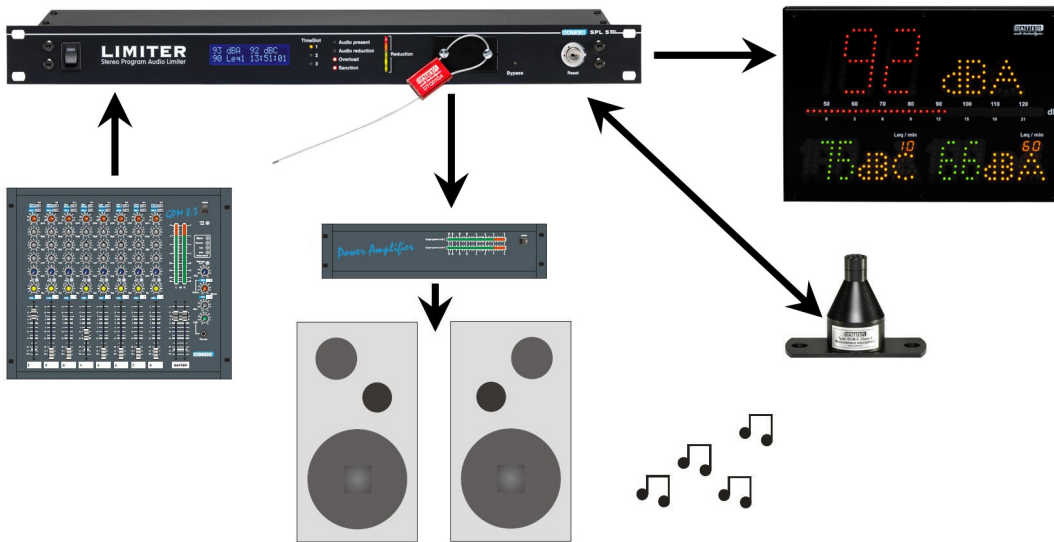


Image 1: Installing the SPL-EXT3 connected to the SPL5 MK2

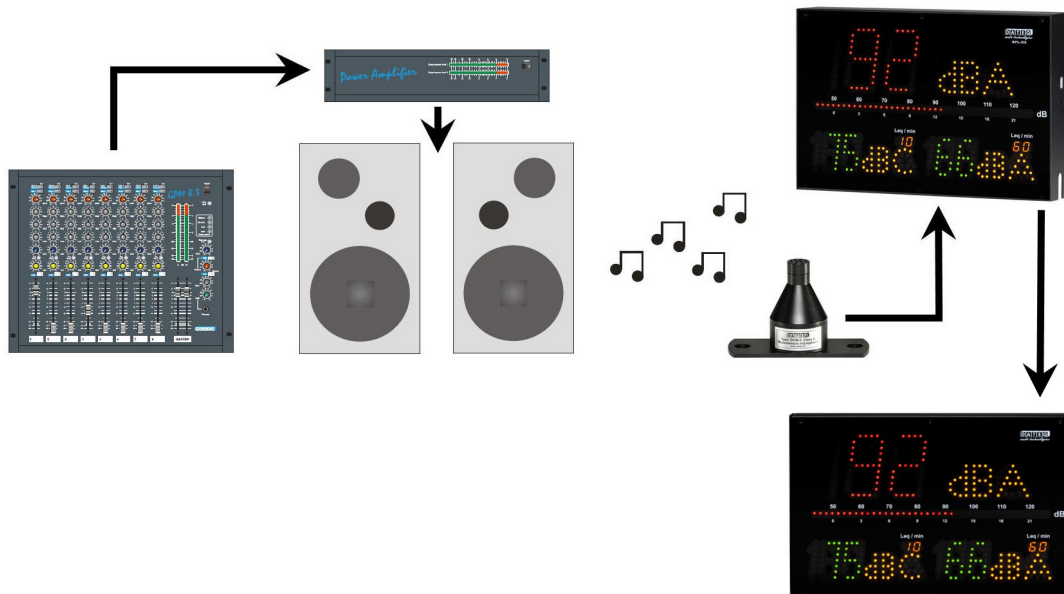


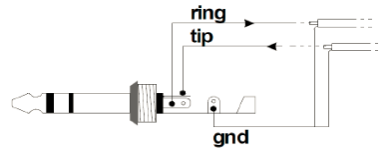
Image 2: Installing the SPL-EXT3 connected to the SPL-D3 logger

Connections

Jack 3-pens female

Pin	Function	Description
SL	Ground	Data ground
Tip	Data TX	Data send
Ring	Data RX	Data receive

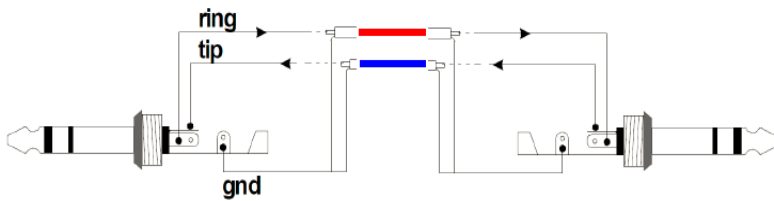
Table 1: Display link connections



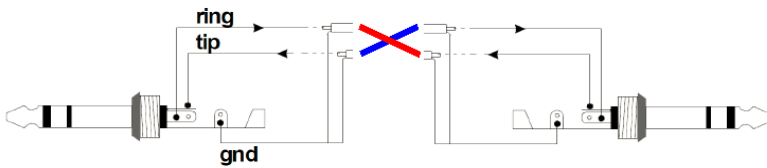
Link

This is the data connection with the optional SPL-D3, SPL-5MK2 or SPL6. For this a stereo 6.3mm jack cable is required.

Cable link setup for SPL5MK2 and SPL6:



Cable link setup for SPL-D3:



Operation



1. Display 1:
Shows the actual measured dB value in green, orange or red.
2. Filter weight:
Shows the used filter weight in dBA, dBC or dB (no filter).
3. VU/Reduction bar:
Shows the actual fast PPM level in dB.
Linked to the SPL-5MK2 or SPL6 the VU meter can also be used to show selected Leq or reduction level of the limiter.
4. Displays 2 and 3:
Shows the actual measured dB value in green, orange or red.
Both displays can be selected with an independent value/ filter.
5. Leq/min:
Shows the used time frame for Leq. In this example 10 minutes for display 2 and 60 minutes for display 3.



6. Link:
Link connection for data link with SPL-5MK2, SPL6 or SPL-D3.
7. Power:
Power connection, 24 volt, advised 1 amp (24 Watt) Normal operation 0.5 amp (12 Watt).



8. VESA 50:
Standard VESA 50 mount for wall mount, M4, max length 12mm.
9. Standard:
Standard mounting bracket provided with the SPL-EXT3, M4, max length 12mm
10. Safety mount:
M5 DIN screw for mounting an extra safety cable. Max screw length: 12mm

Technical specifications

Common

Norm

- EU: Measurement chain designed to comply according specifications IEC-61672-1 class 2
- France: Measurement chain designed to comply according specifications NFS 31-122-1-2017 and décret 2017-1244
- BE: Measurement chain designed to comply according specifications VLAREM-II Cat.1, Cat.2 and Cat.3
- DE: Measurement chain designed to comply according specifications DIN-61672, DIN-60651 and DIN15905-5

Link

Optical isolated data protocol

Power supply

Supply voltage	24 volt
Power usage (max)	24 Watt
Power usage (normal operation)	12 Watt

Dimensions and weight

Front	282mm x 192mm
Depth	55mm
Weight	2.8kg

DECLARATION OF CONFORMITY

acc.to art.10.1 EMC directive 89/336/EEC

We, **DATEQ Audio Technologies B.V.**
de Paal 37
1351 JG ALMERE
THE NETHERLANDS

hereby declare, exclusively to our responsibility, that this product

Type: **SPL EXT3** Serialnrs.: 60-XXXX

to which this declaration applies, is in accordance with the following
harmonized European norms

EN 50081-1 and EN 50082-1

According to the regulations of the EMC-directive 89/336/EEG, amended by
directive 91/263/EEG, 92/31/EEG and 93/68/EEG.

EN 60065

According to the regulations of IEC 65: 1985 + A1: 1987 + A2: 1989 + A3:
1992, mod. Ratification: 1993-07-06

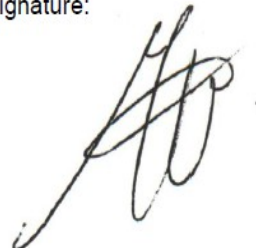
Almere, September 17th 2020

Managing director

stamp:

DATEQ
audio technologies
De Paal 37
1351 JG Almere
tel. 036-5472222, fax 036-5317776

signature:



Product support

For questions about the SPL series limiters, accessories or other products contact Dateq at:

Dateq Audio Technologies B.V.

De Paal 37
1351 JG Almere
The Netherlands

Phone: +31 (0)36 54 72 222
E-mail: info@dateq.nl
Internet: www.dateq.nl