



PRO 250-300/T plus black-EN54

- Outdoor application
- Strong beam type sound
- IP 66



EN 54-24:2008
Ref. Nr.: 022-04
ID-Code: SAA-LS28
1438-CPR-0814

ic audio GmbH, Boehringerstraße 14a,
D-68307 Mannheim, Germany

CE-Symbol gemäß Richtlinie 93/68EWG

The 2-way coaxial horn speaker is engineered for outdoor applications with superb foreground sound and EN54 certification. The PRO 250-300/T plus black-EN54 delivers a smooth and powerful beam-type sound for a large range of venues, such as airports, mega-stores, or stadiums.

The 250W powered professional speaker is equipped with an impressive 2-way bass-reflex system, consisting of a 12" woofer and a high-performance HF-driver with crossover at 2.5kHz. The speaker offers 3 different 100V power tapings, and low-impedance operation is also possible.

The robust, impact-resistant ABS housing with a hexagonal steel grid offers IP 66 enclosure protection. The connection is made via a screw terminal on the back of the speaker, which is protected by a cover plate with 2 x PG11 cable glands.

The inclination-adjustable mounting bracket made of stainless steel enables easy and safe mounting. A safety rope is included in the delivery.

Technical Data (Electrical)

| | |
|----------------------------|-------------------------------|
| Description | PRO 250-300/T plus black-EN54 |
| Power | 250/125/63W (8ohm) |
| Impedance (100V) | 40/80/158 ohm |
| Frequency Range | 85 - 19.000 Hz |
| Frequency Response | 75 - 20.000 Hz |
| SPL IEC268-5, 1W/1m | 99,6 dB |
| SPL EN54-24, Pmax/4m | 110,5 dB |
| Sensitivity EN54-24, 1W/4m | 86,5 dB |
| Dispersion -6dB, 500Hz | 138° (h) 152° (v) |
| Dispersion -6dB, 1KHz | 60° (h) 70° (v) |
| Dispersion -6dB, 2KHz | 90° (h) 110° (v) |
| Dispersion -6dB, 4KHz | 80° (h) 70° (v) |

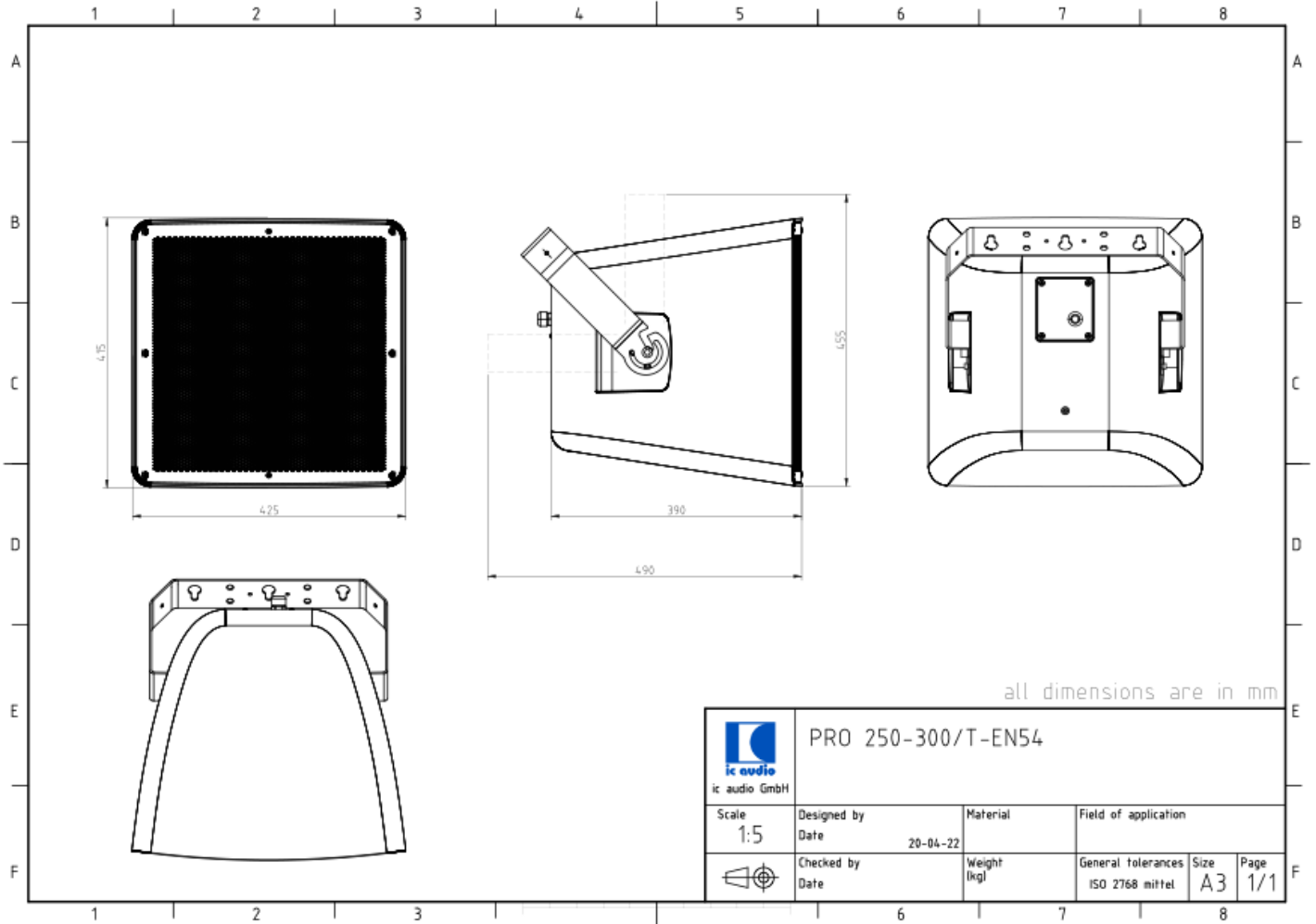
Technical Data (Mechanical)

| | |
|-----------------------|----------------------|
| Dimensions | 390x425x418 mm |
| IP Rating | IP66 |
| Weight (net) | 18,9 kg |
| Temperature Range | -25 / +70 °C |
| Mounting | Mounting bracket |
| Connector | 4-pin screw terminal |
| Terminal Diameter | 2,5 mm |
| Maximum Cable Passage | 4,9 mm ² |
| Colour | black |

Product Attributes

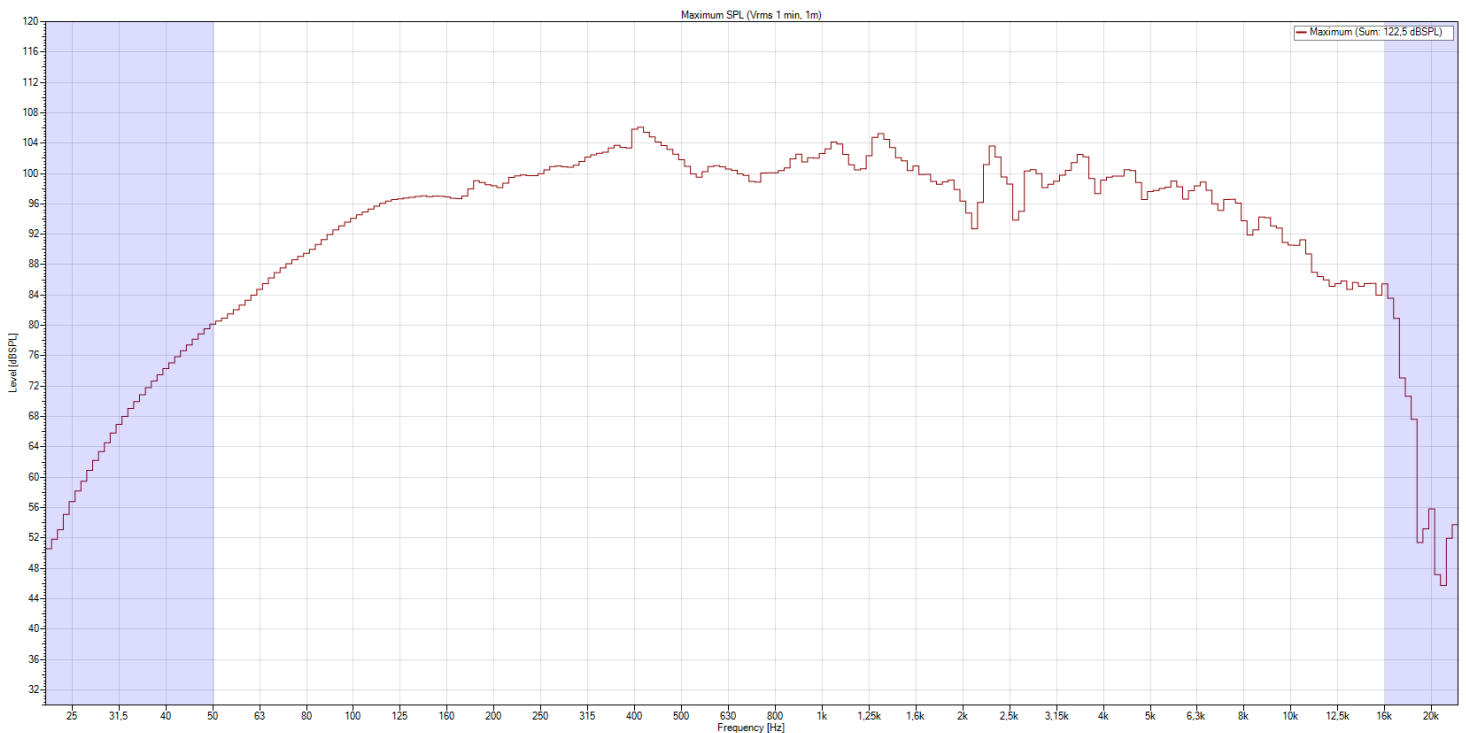
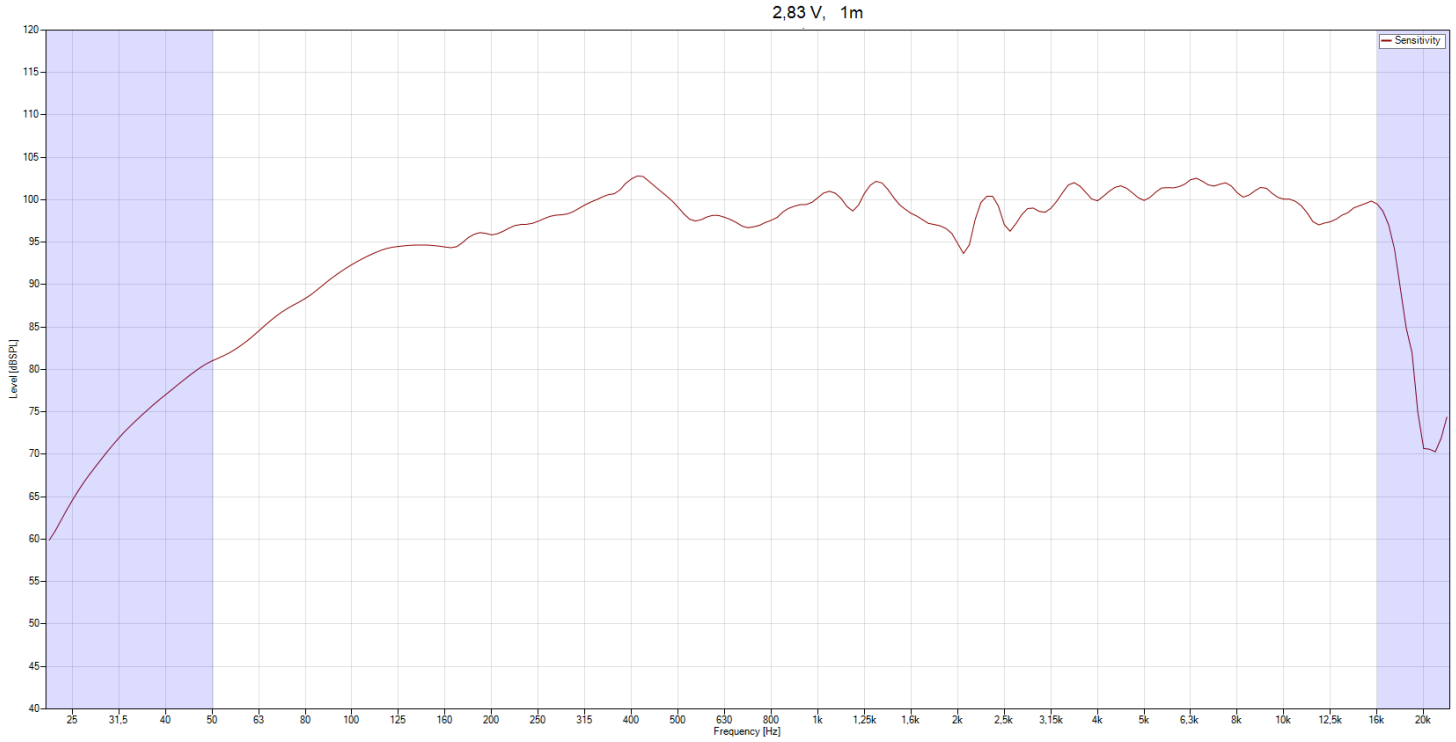


Technical Drawing



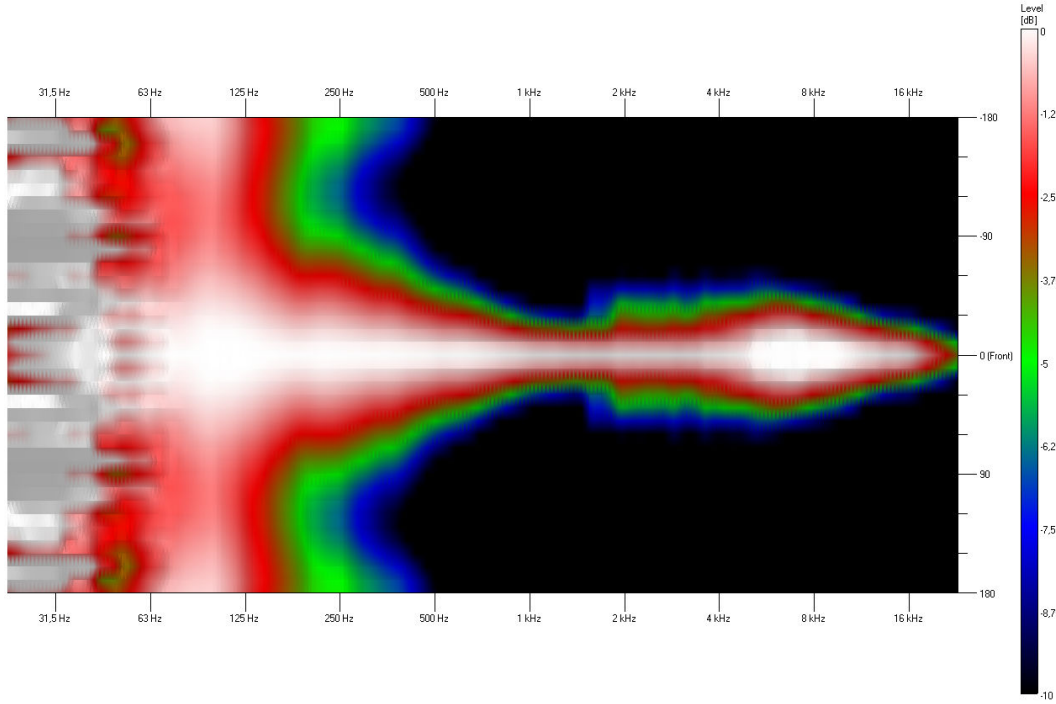
Frequency Response Diagram

Sensitivity

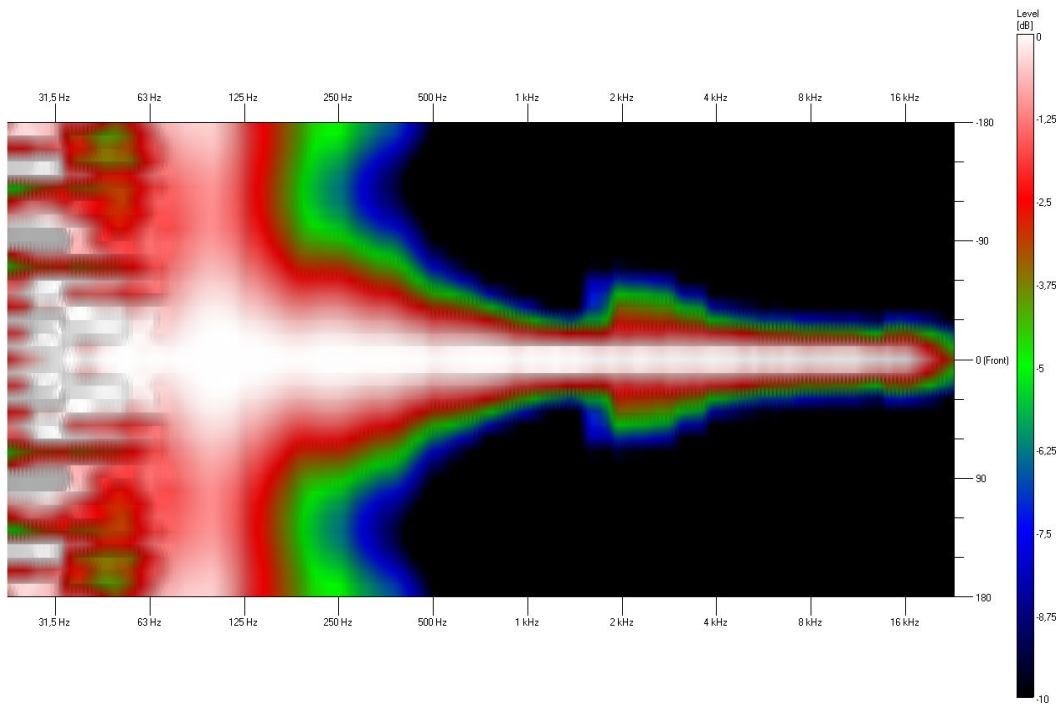


Isobar

Horizontal

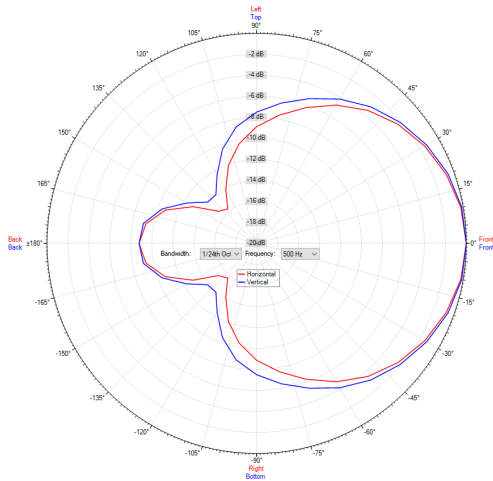


Vertical

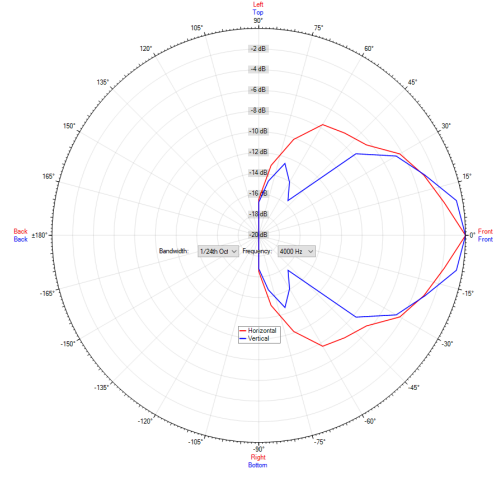


Polar Diagram

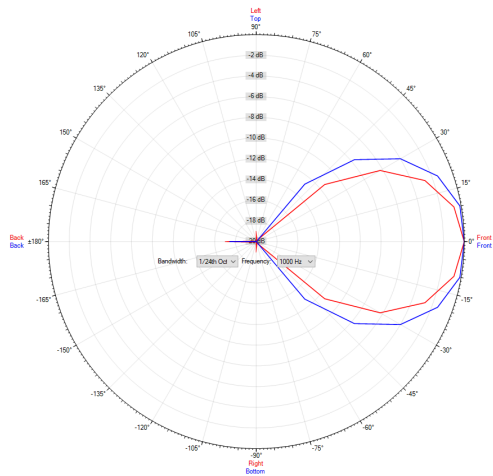
Polar Diagram 500Hz



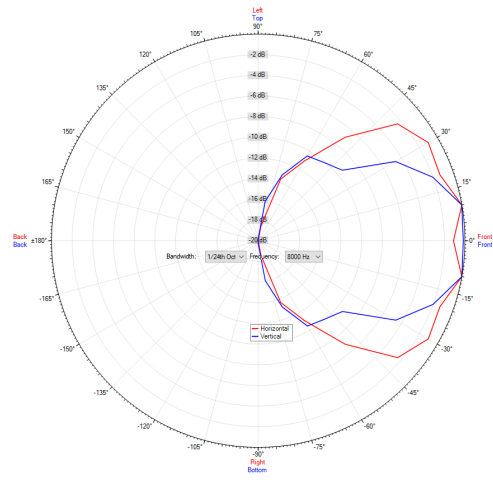
Polar Diagram 4000Hz



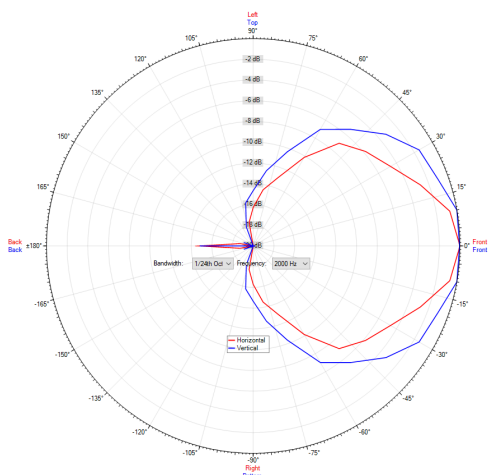
Polar Diagram 1000Hz



Polar Diagram 8000Hz



Polar Diagram 2000Hz



ic audio loudspeakers are tested and classified according to the IEC standard 60529 (degree of protection by enclosure) against the penetration of foreign objects and moisture. The classification is conforming to standards through characterization with a fixed code. This code consists of the letters IP (International Protection) followed by two digits. The first digit indicates the degree of protection against dust and the second digit the degree of protection against water. Please note that the testing of the products has been carried out in laboratory conditions which are not always 100% comparable with the conditions of different installation environments. This protection can be reduced due to normal wear and tear depending on the installation environment.

RoHS compliant (2011/65/EU)

The IP rating specified is based on ic audio test results, not on CNBOP-PIB test results. Certification only verifies the minimum requirements for EN54-24 compliance.



Article Nr.: 20217067
Packing Unit: 1

